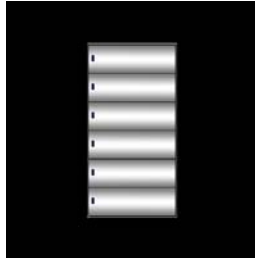


**Concept:** Smart-Bus Automation  
**Category:** User Interface

**6 Button Wall Switch Panel**

6 Button Smart Switch Digital Wall Panel



**Description**

**Multifunctional 6 button Smart Switch Digital Wall Panel**

An Extremely Easy to use full life-style elegant combined panel that solve the problem of cluttering and wall agony, the problem of knowing buttons functionality, and the problem of matching the decoration finishes and materials. It is an Award Winner.

- Changeable Buttons Colors
- Changeable Face Cover Plate
- Button Engraving to any Language
- Infra Red Remote Controlled Panel with LED and Back Lighting
- Auto Lock function to use in Restaurants and Party halls
- Controlling Lights, Scene, Shades, AC, Infra-red TV , DVD

CEA—Best Energy Saving Product Category

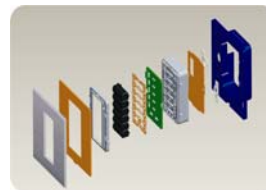
**Available Accessories**

- GI Back Box: 3"X3"X 1.5"-2"
- Black Glass Cover Plate
- White Glass Cover Plate
- Silver Aluminum Cover Plate
- Yellow or Red Golden Cover Page
- Wood / Marble / Special Coffee Cover Plate

**Page Related To**

Model	Part #
SB-WS6-UK	WS6-UK

Features	Specifications
<ul style="list-style-type: none"> <li>• Adjustable Back Lighting and Buttons LED Backlighting</li> <li>• Single Click, Double Click, Continuous Press different Functions for each Button.</li> <li>• 6 buttons Panel.</li> <li>• Infra Red Receiver</li> <li>• Flexible Finishes available as Stainless, Golden, Glass, Wood, marble ++</li> <li>• Changeable Buttons Colors</li> <li>• Auto button Lock functions</li> <li>• Enable Disable IR Receiver Function</li> </ul>	<p><b>Power Input:</b> 8– 32V DC, from Bus</p> <p><b>Power Consumption:</b> 25mA/DC24V</p> <p><b>Ambient Conditions:</b> <b>Working Temperature:</b> 0°C - 40°C</p> <p><b>Working Relative Humidity:</b> 20% - 90%</p> <p><b>Storage Temperature:</b> -40°C - +55°C</p> <p><b>Storage Relative Humidity:</b> 10% - 93%</p> <p><b>Interface:</b> 6 Buttons</p> <p><b>Installation:</b> Wall mounting into British Standard Back Box.</p> <p><b>Mounting:</b> 2 screws to the back box</p> <p><b>Graphics:</b> Engraving to any Language</p> <p><b>Communication:</b> Smart-BUS + IR</p> <p><b>Addressing:</b> MAC &amp; Digital</p>



Applications	Dimensions
<ul style="list-style-type: none"> <li>- Homes, apartment different room</li> <li>- offices, showrooms</li> <li>- Restaurant and others</li> </ul>	<p>Front: 8.5cmX8.5cm Depth: 3.5 cm</p>

Brief Specification
Elegant Wall panel with changeable cover plate and engraved buttons, to control your Lights Scene shade and macro with double click single and keep press Auto Lock function, IR enabled

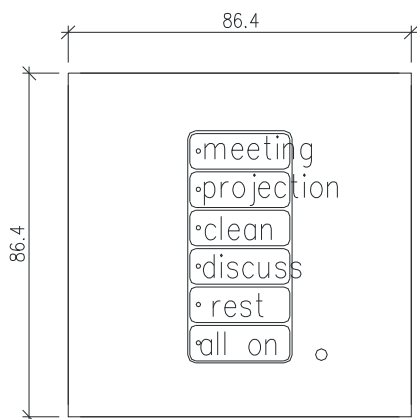
Required With	Pre-Requirement
Use 8-32V DC Power supply 25mA/DC24V	S-BUS or H-Net System

Wiring Instruction
Daisy Chain, Bus Wiring Topology, Use Cat5e Twisted

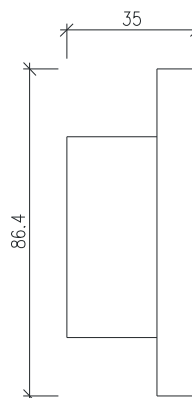
## Connection Diagrams and Engineering Schematics

<b>6 Buttons Panel</b>	Model #	HDL Part #
Multifunctional Key Wall Panel	SB-WS6-UK	MPL06

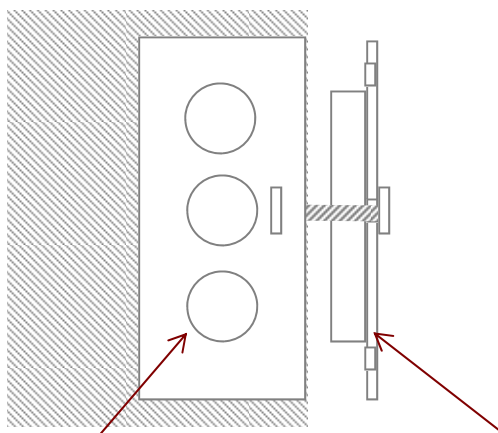
### Product Details and Sizes



Front View



Side View



3"X3" GI Back Box

Wall panel Mechanical Details

Engraving	Net Weight	Box Size	Gross Weight
Standard Laser In English, Optional Other	150 grams	10X10X5 cm	170 grams

### Connection Diagram

